



# *SWIFT*

*Play*  
**SWIFT**







## Driver-oriented cockpit design

The Swift's cockpit provides a truly immersive driving experience that is designed to put all the instruments and controls you need within easy reach. It features wrap around, black dashboard and front door trim giving the cabin a sporty look that heightens your driving fun.



### Meter cluster

The sporty and stylish meter cluster is equipped with an LCD panel that lets you view a wide range of information at a glance, including average and current fuel consumption, driving range, posted speed limits, and warnings from the advanced safety and assistive driving systems.

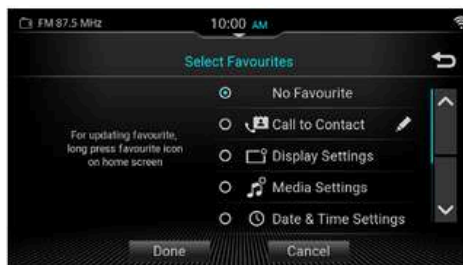
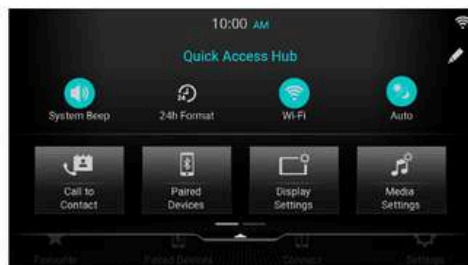


### Front seats

The design of the front seats reflects the Swift's unique character and is cushioned at the shoulders and sides to enhance driver and passenger comfort. The design of the seats emphasises the energetic and sporty DNA of the Swift, and the colour is black featuring a contrast between the matte base surface and the embossed pattern of the upholstery.



9-inch display audio (GLX only)



7-inch display audio (GL with DSBS II, GL)

## Display audio system

The display audio system is housed in a floating midsection that is subtly angled toward the driver for easy viewing and touch-control operation. In addition, the interface can be freely customised and used for navigation information or rearview camera image display.

(9-inch display audio for GLX or 7-inch display audio for GL with DSBS II, GL.)

### Audiovisual features

AM/FM/DAB tuner	Bluetooth®(for hands-free calling & audio playback)
USB port (for AV playback & device charging)	Rear-view camera display

### Smartphone connectivity via USB and WiFi®

Apple CarPlay®	Android Auto™
----------------	---------------



## Vehicle linkage information display

Thanks to vehicle linkage integration, the display audio system screen can also show real-time information such as current fuel consumption, average fuel consumption, driving range, and various types of warning messages.



Apple CarPlay works with your iPhone and Siri to help you get directions, make calls, play music, and send and receive messages using voice commands or the display audio touch panel interface.



Talk to Google Assistant on Android Auto and get things done with your voice so you can keep your focus on driving. Easily send messages, get directions, control media and more. Just say, "Hey Google" or, in compatible cars, long press the voice control button on your steering wheel to get started.

\*Apple CarPlay is supported in the countries listed at the following link: <https://www.apple.com/ios/feature-availability/#applecarplay-applecarplay>

For more details, including iPhone models and iOS versions compatible with Apple CarPlay, see: <https://www.apple.com/ios/carplay/>

\*Android Auto is supported in the countries listed at the following link: <https://www.android.com/auto/>  
Compatible Android phone and compatible active data plan required.

\*Apple, Apple CarPlay, iPhone and Siri are trademarks of Apple Inc., registered in the U.S. and other countries.

\*Google, Android, Android Auto, YouTube Music and other marks are trademarks of Google LLC.

\*Bluetooth is a registered trademark of Bluetooth SIG, Inc.

\*Wi-Fi is a registered trademark of Wi-Fi Alliance®.



## Air conditioner

Swift GLX grade models are equipped with an air conditioner with a digital control panel and automatic temperature control, while GL and GL+ grade models are equipped with an air conditioner with a digital control panel and manually selectable air conditioning modes.



## Accessory and USB sockets

All grades are equipped with a DC12V accessory socket and a USB socket for device connectivity.





## Get ready to play

**Swift driving is fun driving, with plenty of in-cabin storage and cabin amenities to hold your gear and refreshments when you're on the road.**

### Interior amenities

With comfortable seating and a full range of amenities, the Swift makes every trip enjoyable. There are storage areas to keep small items organised and close to hand, as well as cup and bottle holders for your favourite beverages.

### Luggage area

The luggage area features a wide and low opening for easy loading and unloading. In addition, the foldable, 60/40 split rear seat backs let you configure the luggage area to suit your needs.









### Engine

The Swift's new 1.2-litre petrol engine combines outstanding fuel efficiency with impressive low-end torque for quick, responsive acceleration. It is also equipped with a number of advanced features that help suppress emissions.



### Transmission

The Swift's CVT transmission enhances fuel efficiency and power delivery with a gear ratio that is specifically optimised to match the performance characteristics of the engine and drivetrain. Shifting action is smooth and responsive, requiring only a light touch to ensure positive gear engagement. In addition, a continuously variable transmission (CVT) is offered for drivers who prefer the convenience of an automatic transmission.

## The power to have fun

The Swift's stunning good looks are matched by performance that makes every trip a fun and exciting new adventure. Whether you use it for commuting, shopping, weekend getaways, or leisurely road trips, it delivers a driving experience that will make you eager to get back out on the road again.



## Advanced features for peace of mind

Driving is even more fun when you know you and your passengers are protected by the latest advances in safety and assistive driving technologies. The new Swift has them in abundance, and they work day and night to help you stay alert so you can arrive safely at your destination. While there is no substitute for safe, responsible driving habits, these advanced technologies can help you stay focused and ready to respond to a variety of different traffic conditions.

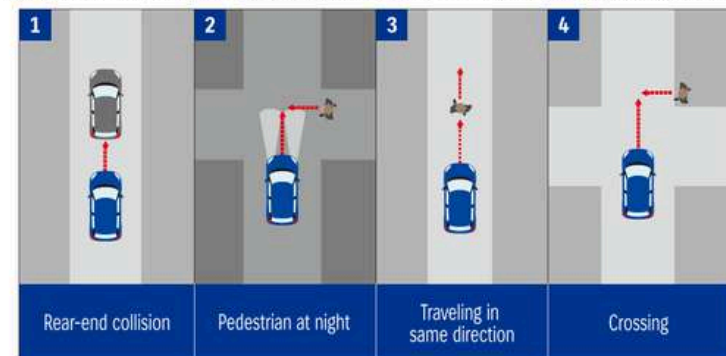
\*There is a limit to the ability of cameras and sensors to detect obstacles, lanes and traffic signs. Please do not rely on this system alone. Always drive safely. Vehicle-to-vehicle distance varies depending on vehicle speed.



### Dual Sensor Brake Support II (DSBS II)

Millimetre-wave radar and a monocular camera are employed to detect vehicles, bicycles, and pedestrians directly or diagonally ahead of the vehicle. If a collision seems possible, audio and visual warnings are issued to alert the driver.

If the driver brakes with insufficient force, brake assist automatically engages to help slow the vehicle. And if the probability of a collision increases, the system automatically applies brake force to help reduce impact force and mitigate damage.

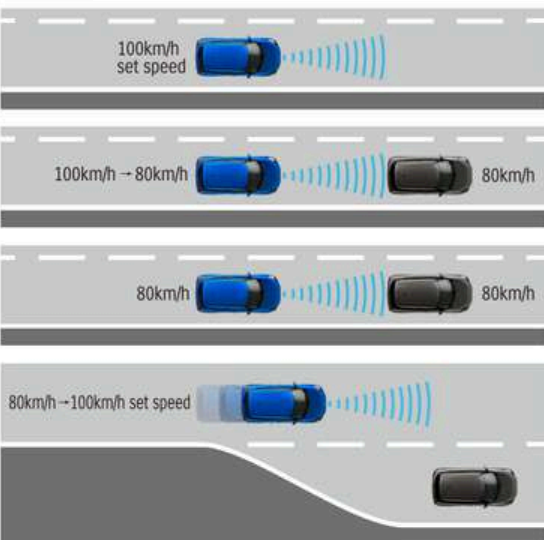






**Adaptive Cruise Control (ACC)** (GLX and GL with DSBS II only)

ACC helps reduce driver fatigue on long trips. The driver can activate the ACC in traffic with a switch on the steering wheel that requires only a single operation. The system, which can be set to four levels, uses millimetre-wave radar and a monocular camera to measure the distance to the vehicle ahead, and will accelerate or decelerate as needed to maintain a set distance. If the road ahead is clear, it will maintain the speed the vehicle was traveling when the switch was engaged. (On CVT-equipped models, ACC disengages when the vehicle comes to a stop.

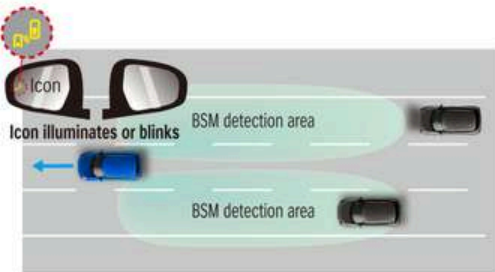


- 1. Constant speed control**  
If there are no vehicles ahead, the speed set by the driver is maintained.
- 2. Deceleration control**  
Speed is reduced to match the speed of the vehicle ahead.
- 3. Following speed control**  
Speed is maintained to match the speed of the vehicle ahead.
- 4. Acceleration control**  
If the vehicle in front departs from the lane and there is sufficient distance from any additional vehicle ahead, the Swift automatically reaccelerates to the set speed.



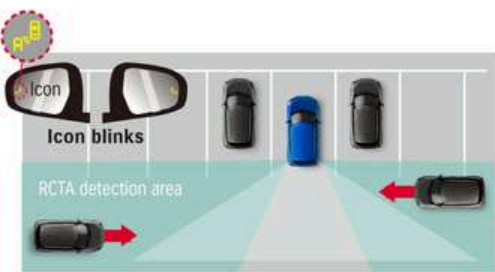
**Blind Spot Monitor (BSM)** (GLX only)

BSM uses millimetre-wave radar sensors in the rear bumper to detect vehicles located in or approaching the rear blind spots on either side of the vehicle. When a vehicle is detected, a warning icon appears in the door mirror on the side that the vehicle is approaching. If the driver activates the turn signal on that side, the icon flashes and an audio warning sounds.



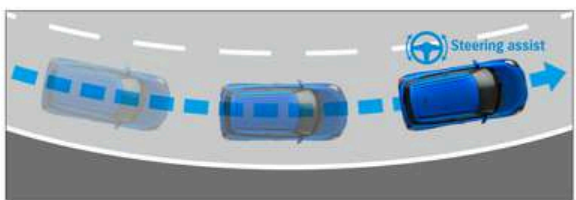
**Rear Cross Traffic Alert (RCTA)** (GLX only)

RCTA is a supplementary safety feature that uses millimetre-wave radar sensors to detect and warn of vehicles approaching from the left or right when backing out of a parking space or garage.



**Lane Keep Assist (LKA)** (GLX and GL with DSBS II only)

The system detects when the car strays too far from the centre of its lane and provides steering assistance to keep the car in the correct position. If the lane lines are unclear, the system will use the track travelled by the preceding car.



**Lane Departure Prevention (LDP)** (GLX and GL with DSBS II only)

When driving, LDP detects the left and right lane demarcation lines and predicts the vehicle's path. If the vehicle begins to drift from the lane due to driver inattention, the system alerts the driver by sounding an audio alert or vibrating the steering wheel. If the system determines there is still a high probability of lane departure, it provides steering assistance to help the driver return to the centre of the lane



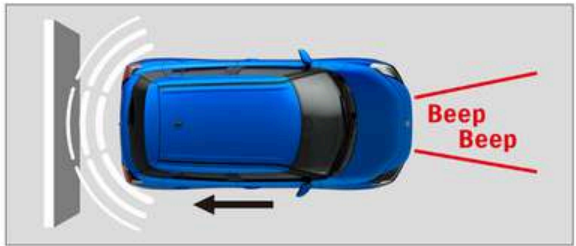
**High beam assist** (GLX only)

When the headlamps are on high beam and there are oncoming or preceding vehicles in front, or if the car is being driven in a well-lit area, the headlamps automatically switch to low beam. The headlamps automatically return to high beam when there are no oncoming or preceding vehicles in front of the car, or when the surrounding area is poorly lit. (Active only at speeds above 30 km/h.)



**Reverse parking sensors**

Ultrasonic sensors in the rear bumper detect obstacles when reversing, and warning beeps sound to indicate the obstacle's proximity.



**Hill hold control**

When starting out on an uphill incline, hill hold control prevents the vehicle from rolling backward for approximately two seconds to give drivers time to move their foot from the brake pedal to the accelerator pedal.





# Major Equipment

Engine			1.2 L	
Drive system			2WD	
Transmission		CVT	CVT	CVT
Grade		GL	GL+	GLX
<b>CHASSIS</b>				
Tyres and wheels	165/60R14 + steel wheels	S	-	-
	185/65R15 + alloy wheels	-	S	-
	185/65R15 + polished alloy wheels	-	-	S
Spare tyre and wheel	T 135/70R15 + steel wheel (for temporary use only)	S	S	S
<b>EXTERIOR</b>				
Front and rear bumpers	Body coloured	S	S	S
Upper front grille	Piano black	S	S	S
Lower front grille	Black	S	S	S
Outside door handles	Body coloured	S	S	S
Tailgate opener	Electromagnetic	S	S	S
Rear quarter garnish	Black(painted)	S	S	S
Exhaust pipes	Single	S	S	S
<b>VISIBILITY</b>				
Headlamps	Halogen projector	S	S	-
	LED projector	-	-	S
	Guide me home / lead to vehicle light	-	-	S
Headlamp levelling device	Manual	S	S	S
Automatic lamps		-	-	S
Fog lamps	Front(LED)	S	S	S
	Rear(Bulb)	S	S	S
Rear combination lamps	LED	S	S	S
Front door & Rear door	Green-tinted windows	S	S	S
Wind screen	UV-cut glass	S	S	S
Wipers	Front: 2 speeds (low, high) + intermittent + washer	S	S	S
	Rear: 1 speed + washer	-	-	S
Rear window defogger		S	S	S
Outside door mirrors	Body coloured	S	S	S
	Electrical adjust	S	S	S
	Electrical fold	S	S	-
	Electrical fold (Auto)	-	-	S
	built-in turn signal lamps	S	S	S
	BSM(Blind Spot Monitor) indicator	-	S	S
Day/night rearview mirror	Manual dimming	S	S	S
<b>STEERING AND INSTRUMENT PANEL</b>				
Power steering		S	S	S
3-spoke steering wheel	Tilt-adjust steering wheel	S	S	S
	Urethane	S	S	-
	Leather covered	-	-	S
	Audio control buttons	S	S	S
	Cruise control buttons	S	S	S
	Hands-free phone control buttons	S	S	S
	With paddle shift	-	-	S
	Lane keeping assist system control button	S	S	S
Meter illumination		White	White	White
Tachometer		S	S	S
Information display	Clock	S	S	S
	Colour dot	S	S	S
	Odo information	S	S	S
	Trip information	S	S	S
	Outside temperature	S	S	S
	Fuel consumption (instantaneous /average)	S	S	S
	Average speed	-	-	S
	Driving range	S	S	S
	Gear position indicator	S	S	S
	Gear shift indicator	-	-	-
Driver's seatbelt reminder	Lamp & Alarm	S	S	S
Passenger's seatbelt reminder	Lamp & Alarm	S	S	S
Rear seatbelt reminder	Lamp & Alarm	S	S	S
Door ajar reminder	Lamp	S	S	S
Low fuel warning	Lamp	S	S	S
Light-off and key reminder	Alarm	S	S	-
Instrument panel ornament(from centre to passenger side)	Painted	S	S	S
Autonomous emergency braking off		(QMC)	(QMC)	(QMC)
Lane departure prevention off		S	S	S

<b>DRIVING AMENITIES</b>				
Electric windows	Front	S	S	S
	Rear	S	S	S
Central door locking	Switch on driver's side	S	S	S
Remote-control door locks	With hazard lamp answerback function	S	S	S
Keyless push start system		-	-	S
Air conditioner	Automatic	-	-	S
	Manual (with digital control panel)	S	S	-
Heater		S	S	S
Pollen filter		S	S	S
Audio	Antenna (Roof) with micro pole	S	S	S
	Front speakers	S	S	S
	Front tweeters	-	-	S
	Rear speakers	S	S	S
	7 inch Display Audio	-	-	-
	7 inch Display Audio + DAB radio	S	S	-
	9 inch Display Audio	-	-	-
	9 inch Display Audio + DAB radio	-	-	S
Cruise control		-	-	-
ACC (Adaptive cruise control)	Full stop	S	S	S
<b>INTERIOR</b>				
Sun visors	Driver's side With ticket holder	S	S	S
	Driver's side With vanity mirror	S	S	S
	Passenger's side With ticket holder	S	S	S
	Passenger's side With vanity mirror	S	S	S
Bluetooth® microphone		S	S	S
Assist grips	Passenger+Rear seat(R/L)	S	S	S
Cup holders	Front x 2	S	S	S
	Rear x 1	S	S	S
Bottle holders	Front door x 2, Rear door x 2	S	S	S
Parking brake lever	With chrome release button	S	S	S
USB port	Instrument panel	S	S	S
12V accessory socket		S	S	S
Foot rest	Driver's side	S	S	S
Remote fuel lid opener		S	S	S
Front door trim ornament	Paint	S	S	S
Front door armrest	Fabric	(QMC)	(QMC)	(QMC)
Rear door armrest	Black material colour	S	S	S
Inside door handles	Chrome	S	S	S
Door pockets	Front & rear doors	S	S	S
<b>SEATS</b>				
Front seats	Seat height adjuster (driver's side)	S	S	S
	Head restraints (separate type)	S	S	S
Rear seats	60:40-split single-folding	S	S	S
<b>LUGGAGE AREA</b>				
Luggage shelf		S	S	S
Luggage area light		S	S	S
<b>SAFETY, SECURITY AND ENVIRONMENTAL COMPATIBILITY</b>				
SRS front dual airbags		S	S	S
SRS side airbags	Front	S	S	S
SRS curtain airbags		S	S	S
Seatbelts	Front: 3-point ELR seatbelts (Side x 2, center x 1)	S	S	S
	Rear: 3-point ELR seatbelts (Side x 2, center x 1)	S	S	S
Child seat tether anchorages	Side	S	S	S
Childproof rear door locks		S	S	S
ABS with EBD function		S	S	S
ESP®**		S	S	S
Dual Sensor Brake Support II (DSBS II)	Vehicle, pedestrian and bicycle detection	S	S	S
	Motorcycle detection	S	S	S
Automatic high beam		-	-	S
Lane keep assist		S	S	S
Lane departure warning		S	S	S
Lane departure prevention		S	S	S
Vehicle swaying warning		S	S	S
Diagnostic		S	S	S
Blind spot monitor / Rear cross traffic alert		-	-	S
Weaving alert		S	S	S
Parking sensors	Rear with alert	S	S	S
Full hold control		S	S	S
TPMS (Tyre Pressure Monitoring System)		S	S	S
Brake assist function		S	S	S
LED daytime running light	Integrated in headlamps	-	-	S
High-mount stop lamp	LED	S	S	S
Immobilizer		S	S	S
Security alarm	Door + front bonnet	S	S	S
Rear-view camera		S	S	S
Engine Auto Stop system		-	-	-
eCall		S	S	S
SUZUKICONNECT		S	S	S

Standard and optional equipment availability may vary for individual markets.  
 Equipments are subject to change without prior notice.  
 \*: Bluetooth is a registered trademark of Bluetooth SIG, Inc. \*\*: ESP is a registered trademark of Daimler AG.  
 The ESP is designed to help keep the SWIFT under control. However, its effectiveness depends on driving conditions and the state of the road surface. If the tyres exceed their grip limit and the wheels start to spin or skid, it may not be fully effective.

Standard and optional equipment available may vary for individual markets.

All photographs in this brochure were taken with relevant permission. Images of the vehicles without number plates on public roads are composite photos.

# Exterior Colours

## Dual-tone colours



Luster Blue Pearl Metallic × Midnight Black Pearl



Sizzling Red Metallic × Midnight Black Pearl



Arctic White Pearl × Midnight Black Pearl

## Mono-tone colours



Luster Blue Pearl Metallic



Sizzling Red Metallic



Novel Orange Pearl Metallic



Arctic White Pearl



Splendid Silver Pearl Metallic

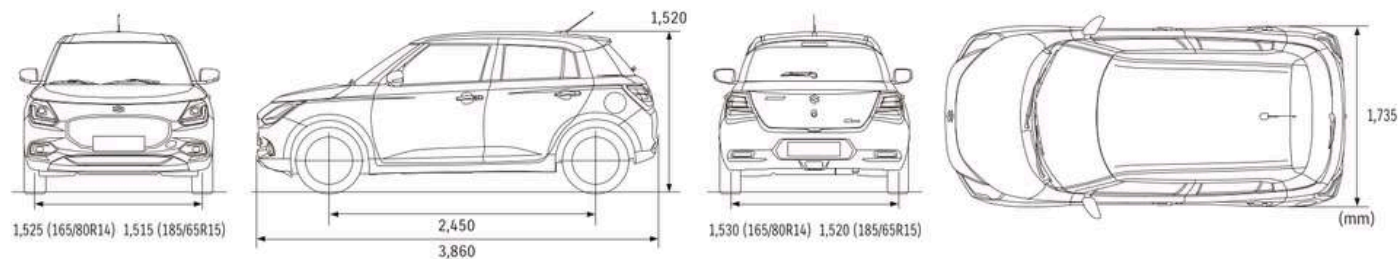


Magma Gray Metallic



Midnight Black Pearl

# Dimensions



# Major Specifications

Engine				Petrol			
Drive system				1.2 L			
				2WD			
DIMENSIONS							
Overall length		mm		3,860			
Overall width		mm		1,735			
Overall height		mm		1,520			
Wheelbase		mm		2,450			
Tread	Front	165/80R14	mm	1,525			
		185/65R15	mm	1,515			
	Rear	165/80R14	mm	1,530			
		185/65R15	mm	1,520			
Minimum turning radius		m		4.8			
Minimum ground clearance		mm		145			
CAPACITY							
Seating capacity				persons		5	
Luggage capacity	Max.volume (manufacturer data)		litres		948		
	Rear seatback folded		litres		580		
	Rear seatback raised		litres		265		
			litres		37		
ENGINE							
Type				Z12E			
Number of cylinders				3			
Number of valves				12			
Piston displacement		cm3		1,197			
Bore×stroke		mm		74.0×92.8			
Compression ratio				12.7 - 13.3			
Maximum output		kW/rpm		60 /5,700			
Maximum torque		Nm/rpm		111.7/4,300			
Fuel distribution				Multipoint Injection			
TRANSMISSION							
Type				5MT	CVT	5MT	CVT
Gear ratio	1st			3.545	2.500 0.392	3.545	2.500 0.392
	2nd			1.905		1.905	
	3rd			1.240		1.240	
	4th			0.906		0.906	
	5th			0.697		0.697	
	Reverse			3.273	2.895	3.273	2.895
Final gear ratio				4.389	5.643	4.389	5.643
CHASSIS							
Steering				Rack & Pinion			
Brakes	Front			Ventilated disc			
	Rear			Drum, leading and trailing			
Suspensions	Front			MacPherson strut with coil spring			
	Rear			Torsion beam with coil spring			
Tyres				165/80R14, 185/65R15			
WEIGHTS							
Kerb weight		kg		908 - 917	932 - 945	928 - 934	950 - 960
Gross vehicle weight		kg		1,355	1,375	1,365	1,390
PERFORMANCE							
Maximum speed		km/h		170	165	170	165

All figures are manufacture's data and may vary for each market.  
The specifications are subject to change without prior notice.





[www.suzuki.ae](http://www.suzuki.ae)

Please note that the images shown may differ from the actual specifications and may change without prior notice.

0924-2025YM  
99999-BSM01-M01



**ABU DHABI** (02) 674 0991 **AL AIN** (03) 761 9556  
**DUBAI** Deira (04) 295 5907 | Sheikh Zayed Road (04) 347 0008  
**SHARJAH** (06) 574 4212 **RAS AL KHAIMAH** (07) 235 1611  
**FUJAIRAH** (09) 224 9280

[artc-suzuki@alrostananigroup.ae](mailto:artc-suzuki@alrostananigroup.ae)



شركة الرستماني التجارية  
AL ROSTAMANI TRADING COMPANY